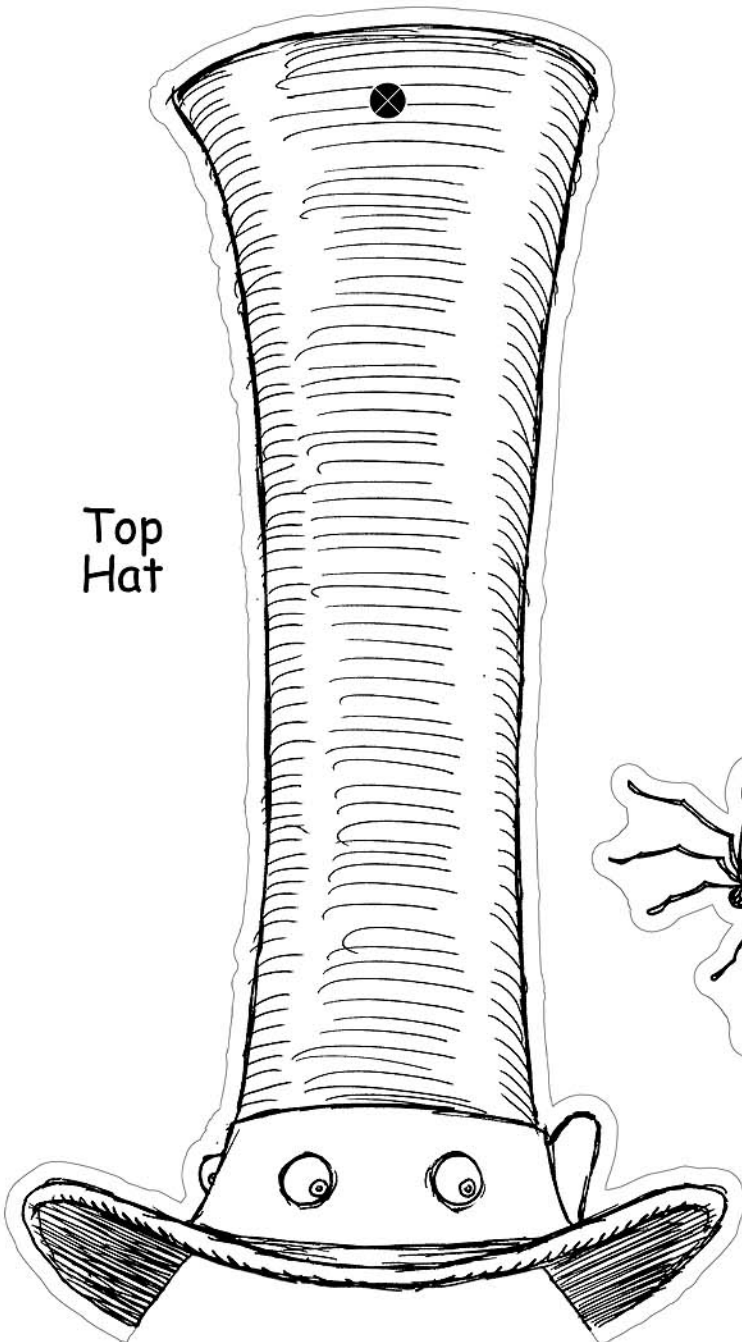


Mr. "Daddy-Long-Legs" Spider

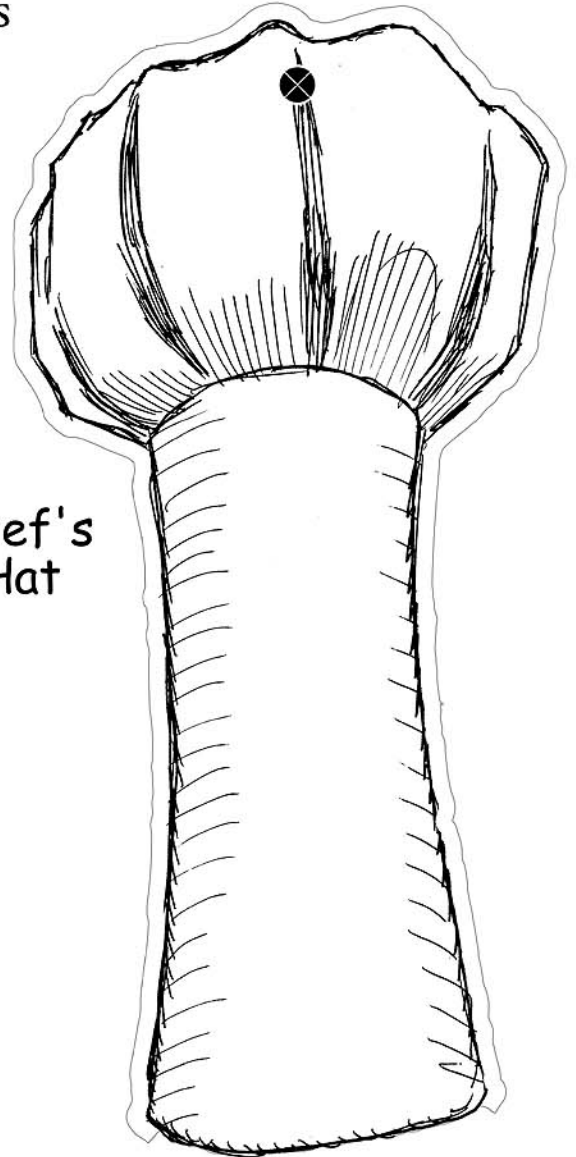
ORDER OPILIONES

Page 5 (Hats)

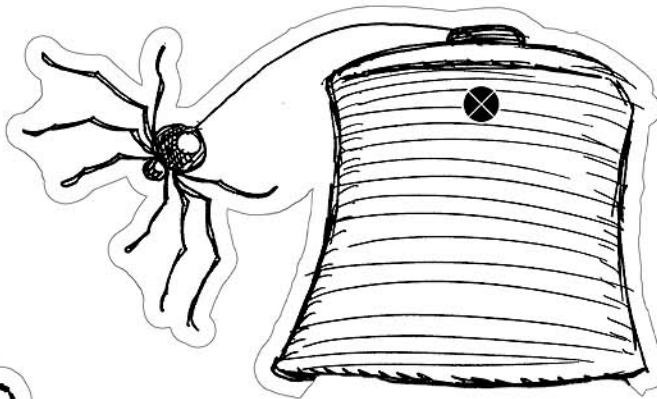
1. Pick which hat you want to use
2. Color with crayons or markers
3. Carefully cut out along outline
4. Punch holes in indicated areas (with a ⊗)
5. Attach to Spider's head with tape



Top Hat



Chef's Hat



Fez

